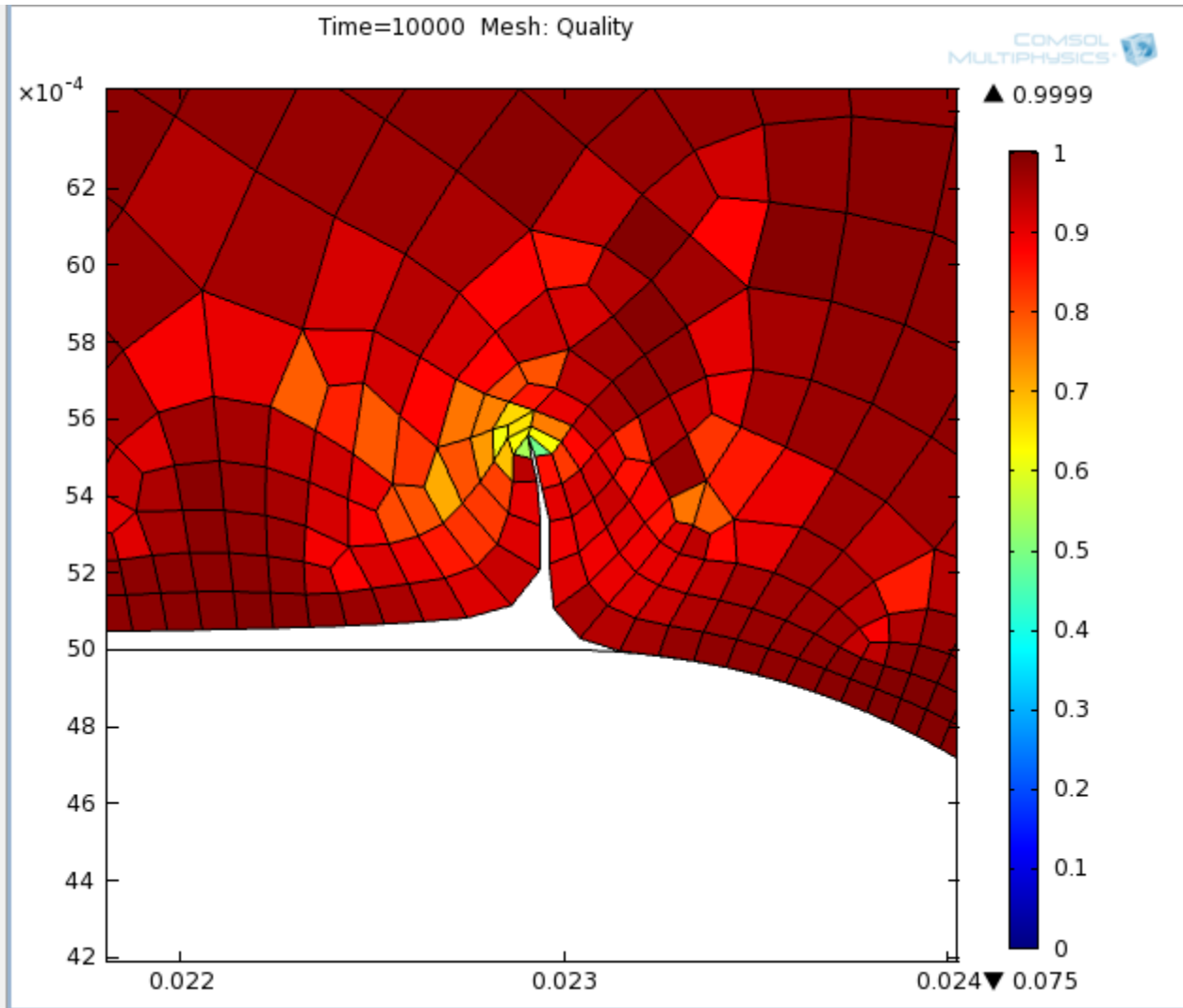
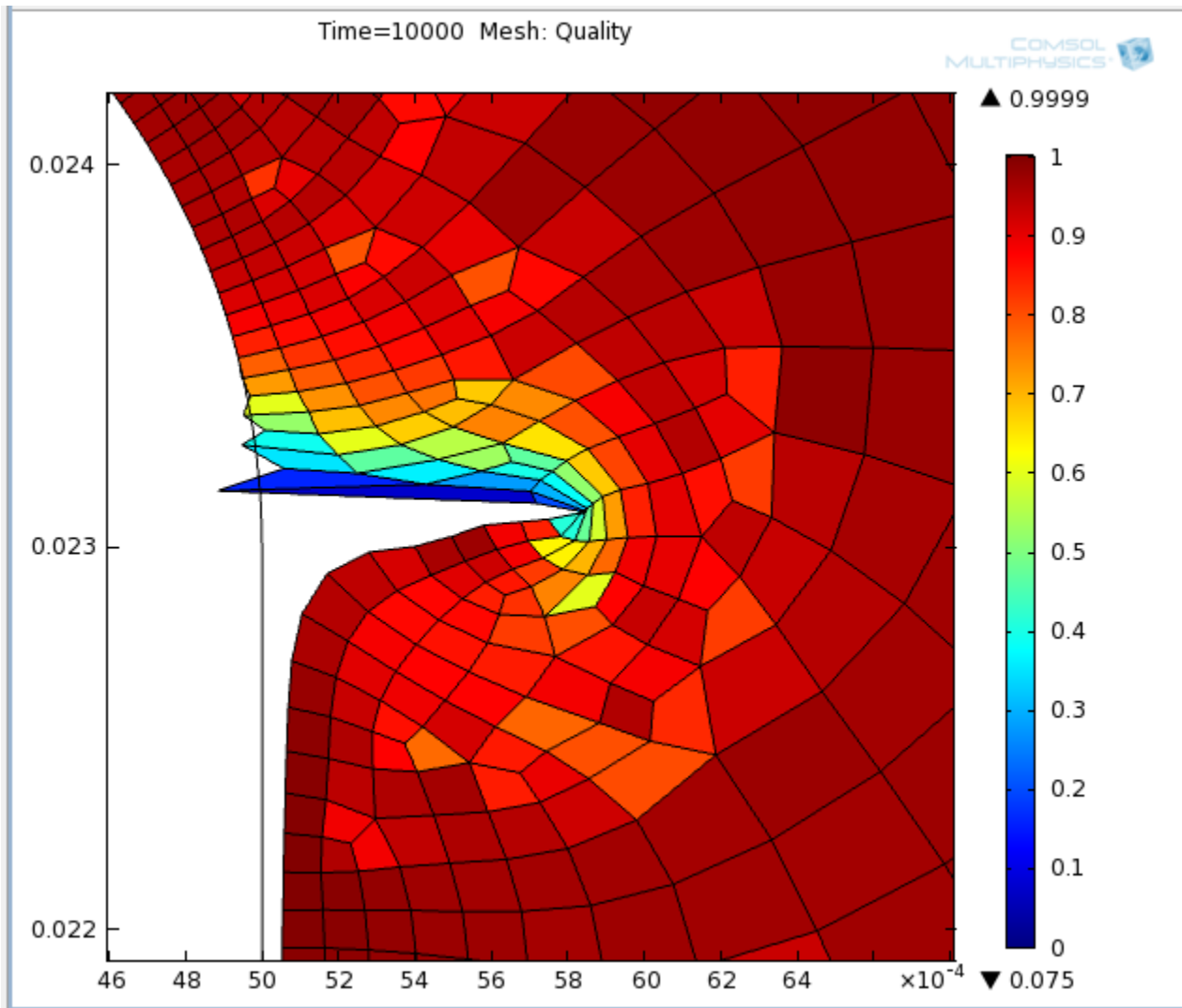


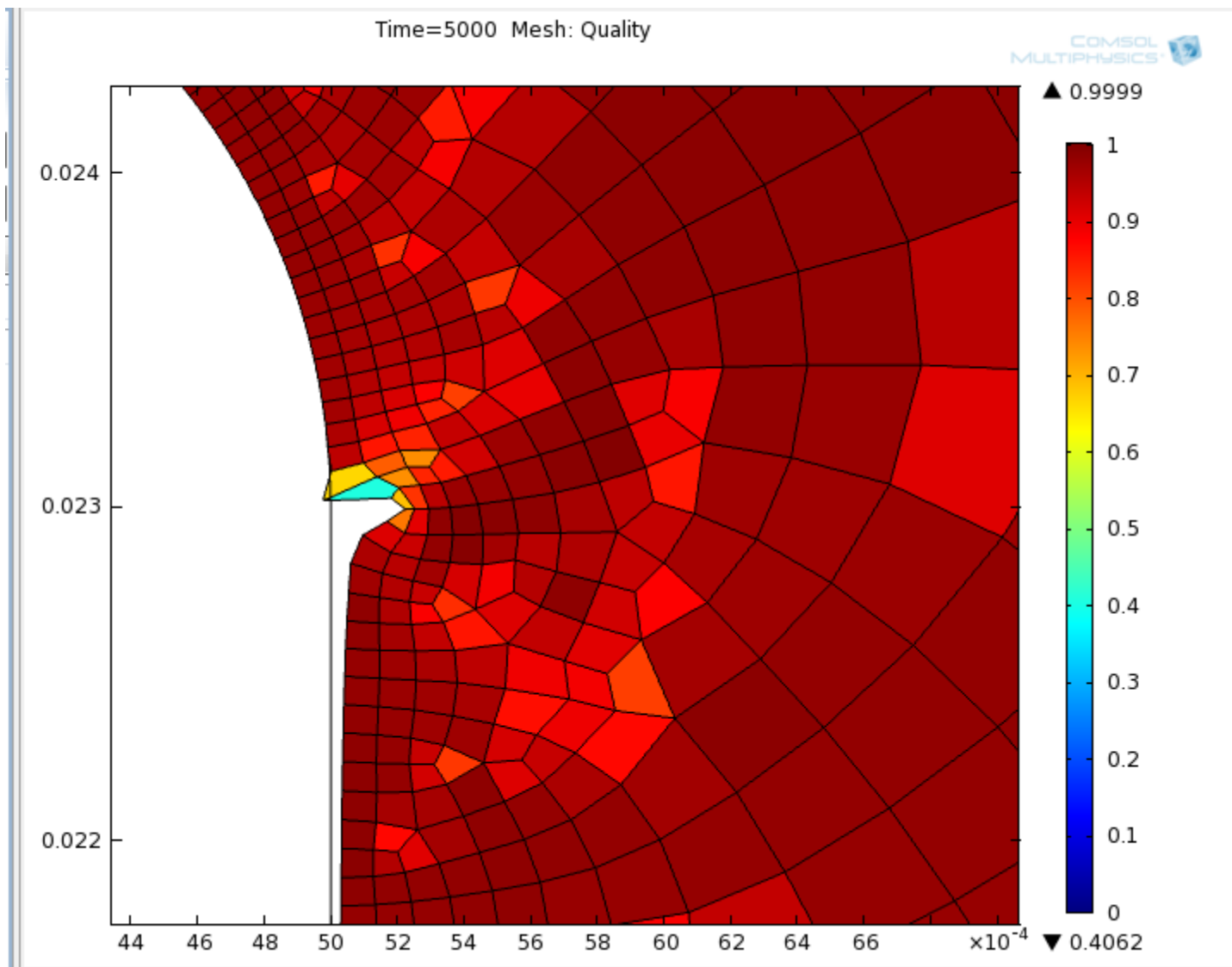
I am trying to model electrodeposition on an angled part like this.



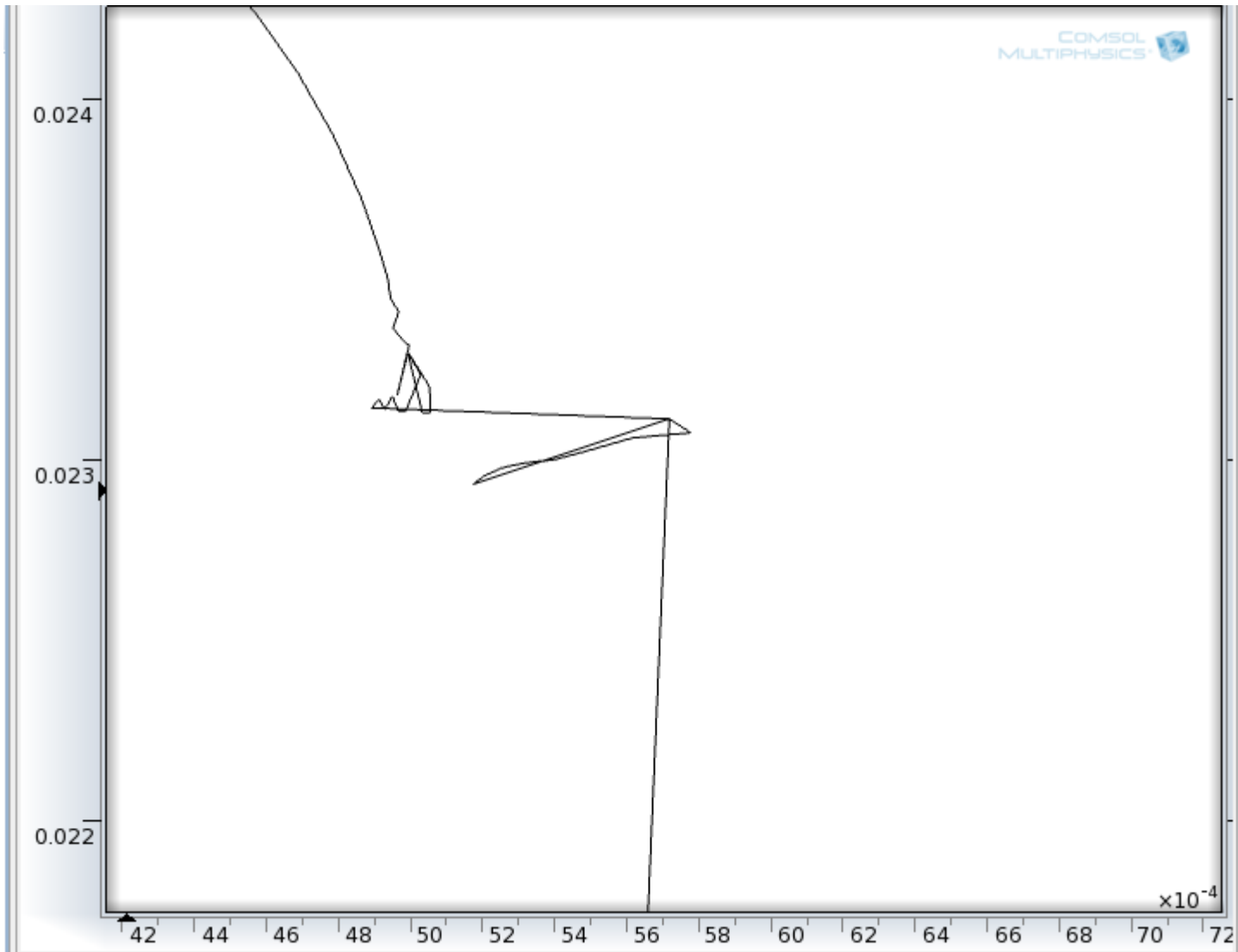
At the edges I get crazy pointy shapes like this.
(the curved section is masked, so it does not receive any deposit)



I could model the deposit by chopping off the edges, but the edges are where your problems come from in platings, so I want to keep them.



I tried remeshing from this point.



But what I got was this. (zoomed in slightly)